



DOHSBase Compare Quick Installation Guide

The CD or the file you received as a download contain all the files for installing the program on a drive. Click on the "setup.exe" to install the program file, the database, help file and additional files to the specified location on the drive.

You can always end the installation by clicking on the "Cancel" button on every screen during the installation. The "Back" button gives you the possibility to review earlier made choices and change them if necessary.

The DOHSBase Compare software is designed to work in Microsoft Windows. As Microsoft has ended the support of Windows XP and earlier versions, we do not support the use of the software under Windows XP and earlier versions. The software works correct in Microsoft Windows 7, 8.0, 8.1 and 10

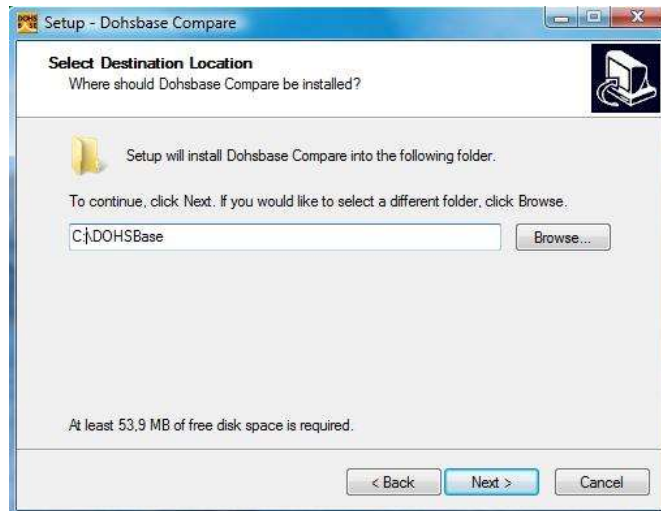
If you use another Operation System the proper functioning is not guaranteed. For instance Apple/Mac users should install first a virtual machine, an emulator (like Parallels) or dual booting to install DOHSBase Compare under Windows (7 or 8.x).

Installation steps

1. If the "autorun" function is enabled, the setup program will start after the CD is put in de CD-drive. If "autorun" is disabled, then double click on the file named "Dohsbase_update#_setup.exe" to start the installation program. Then the following screen appears (figure 1).



2. Click on "Next" to continue. The following screen appears (figure 2).



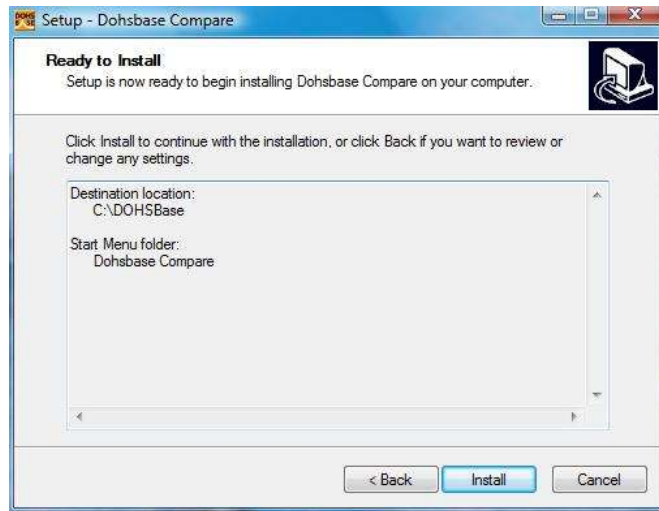
NOTE: Do NOT install the program in C:\Program Files folder, but directly at C:\ for instance at C:\DOHSBase. This is necessary because the program stores the data-files of Compare-sessions in a sub-folder of \Dohsbase\. Windows prevents programs to store data-files in \Program Files folders.

3. Clicking on “Next” brings the following screen (figure 3).

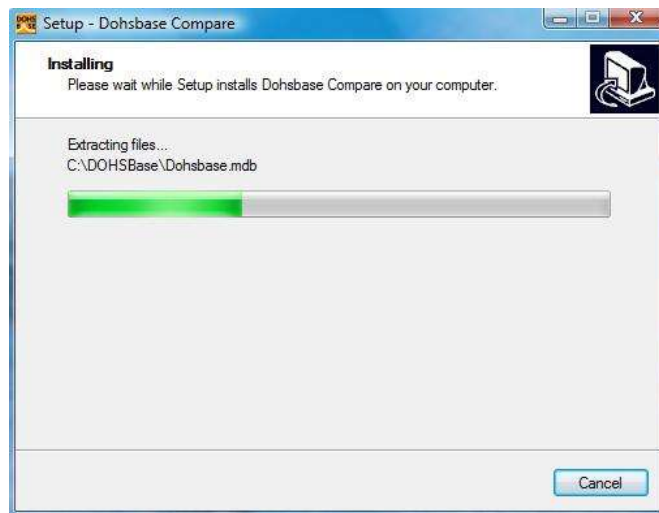


Fill in the desired name of the Start Menu folder. Default is “DOHSBase Compare”.

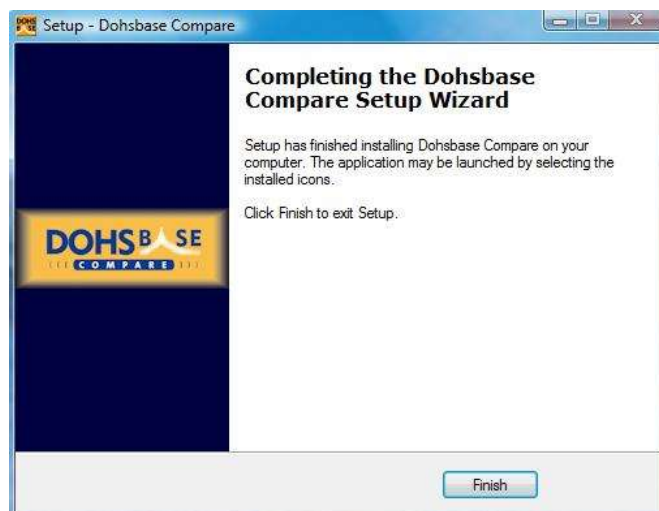
4. After clicking on “Next” the following screen appears (figure 4), with a recapitulation.



5. Clicking on “Install” starts the installation process. You will see a screen like the following (figure 5). The progress of the installation is visualized.



6. After the installation is completed the following screen is shown (figure 6).



7. By clicking on "Finish" the installation is complete and the installation program will end. You can now use the program.
8. The first time you start DOHSBase Compare you need to enter your license name and license code first (figure 7). This needs only to be done the first time you start the software and after installing the updates. The license name and code are provided after buying the software.

NOTE: store your license name and code in a safe place, because you will need them after installing updates!



9. After you have entered the correct license name and license code, the software starts and you are ready to work with DOHSBase Compare!

Installation/security issues

It happens that sometimes the installation of DOHSBase Compare is aborted. The root-cause of this lies in the security settings of Windows 7 and 8.x. The best way to solve this is to right-click on the installation-file ("Dohsbase_update#_setup.exe") and choose option 2: execute as administrator.

If you still have trouble installing the program, do not hesitate to contact the Help Desk by mailing to: helpdesk@dohsbase.nl

Happy working with DOHSBase Compare!

The DOHSBase Compare team