

Update 2016-01

This Newsletter is published simultaneously with the distribution of update 2016-01 of DOHSBase Compare. In this update many adjustments were made. These can be found later in this Newsletter. With update 2016-01 you have an up-to-date overview of occupational exposure limits, measurement methods, physico-chemical properties and classifications: the deadline was mid-December 2015.

When you install the program some *installation problems* may occur. These have to do with improved security settings of Windows. Further on in this newsletter we show you how to fix them.

Download DOHSBase Compare

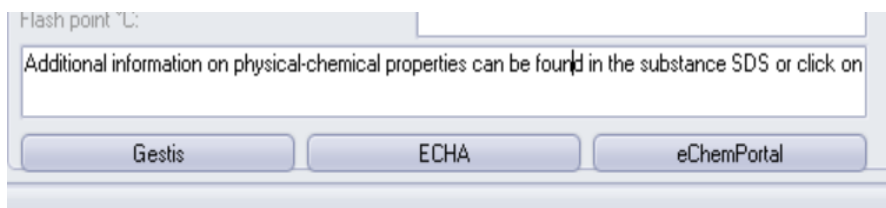
From 2016-01 update, it is possible to download the update from our server, instead of receiving the DVD. This is an efficient way to receive the update and distribute it to the users. The latest update is always available for you.

Sign up for this by sending an email to admin@dohsbase.nl with the subject line "Yes, I want to download DOHSBase Compare". We then create an environment for you in our customer portal. You will receive a username and password. With this you can download the update. We mailed our customers already on this new possibility. If you might not have received it, please contact us at the above address.

Tab 'Properties' modified

We have changed the Tab 'Properties' in the Search&Find mode almost completely. The classification according to the 'old' EU Directive 67/548 / EEC (with the orange symbols and R phrases) is removed. This creates more space for a different layout and new data. At the right in this Tab the (harmonized) classification and labelling according to the (new) CLP Regulation is presented. On the left side the physico-chemical properties are presented.

Bottom left is a new item: "Additional Information". In this item, we give the possibility to use in addition to the data presented here, four sources. Firstly, the Safety Data Sheet (SDS) that you may have in your possession. The three other sources are available on the internet. These are (from left to right) the GESTIS 'database on dangerous substances', the REACH registration dossier at ECHA and the eChemPortal (the "OECD Global Portal to Information on Chemical Substances"). Clicking the



button opens the corresponding web page. You need to enter the CAS number or the name of the substance and you then get the available information, including physico-chemical properties.

DOHSBASE-evaluations of CLP-notifications

Compare DOHSBase contains about 4.800 harmonized classifications and offers to 110.000 substances a 'deep link' to classifications in the ECHA C&L database. Because producers are free to classify substances, the database shows sometimes dozens aggregated classifications for the same substance. This is partly causing the differences in classification and labelling on the SDS that you may encounter.

We have evaluated for several dozen substances these aggregated notified classifications. We present our preferred classification in the text field "Classification Hazard class ...". For more information on this evaluation: click in this field and then press the F1

key for context-sensitive help. Our preferred classification is preceded by the phrase "DOHSBase evaluation". This preference classification is only made if the substance has no harmonized CLP classifications.

CLP 1207/08/EC CLH Annex 6 & DOHSBase evaluation notified classifications	
Classification Hazard Class Category Codes(s) GHS/CLP	DOHSBase evaluation: Repr. 1B H360 May damage fertility or the unborn child, based on 23 of 29 notifiers. No REACH registration. (150822)
Labelling Hazard statement Code(s)	Click the button below to consult ECHA's Aggregated summary of Classification and Labelling Notifications.
Suppl. Hazard statement Code(s)	<input type="text"/>
Index# (Annex I, EC):	<input type="text"/> <input type="button" value="Check the ECHA C & L notification"/>

Compare function updated

In this update we have updated the Compare function. In line with the new calculated kick-off values in 2014 and the removal of the classification with R-phrases, we have recalculated the TOX parameter with the CLP-classification (H-statements). We use other classification schemes than in 2005. There are now three models to choose from: the German IFA Spaltenmodell, the British COSHH Essentials and the German EMKG (Inhalation). More background information on these schemes can be found in the Help file of the program.

With the Compare mode of DOHSBase it is possible to order substances on the basis of risk potential. Two parameters are used: the first one is TOX. With this parameter, a hazard class is assigned to the substance, according to one of the above classification schemes. The other parameter is TIX. This parameter calculates the exceedance of the occupational exposure limit, on basis of the saturation concentration. The product of both parameters we called RAS: Risk Assessment Score. This allows you to create a substantive basis to set priorities for the implementation of measures.

Webinar on January 27th, 2016

On Wednesday, January 27th, 2016 we will hold the first webinar of DOHSBase. In this presentation on the Internet, we want to show users and others interested the possibilities of the program. We also pay attention to the new lay-out of the Tab 'Properties' and the updated 'Compare' mode. The webinar (in Dutch only) will take one hour and will be held on Wednesday,

January 27th, 2016 at 14:00 hours (Central European Time). In the evening at 20.30 hours we will repeat the presentation.

Would you like to attend one of the sessions? Please send an email to events@dohsbase.nl. We will send you the required credentials. There are, as it is the first time, no charge to attend the webinar.

Old kick-off levels 2005 no longer displayed

In 2005, we calculated for the first time the kick-off levels. In 2014, the kick-off levels were recalculated with the classification of H-statements, other classification schemes and a larger and more recent database of classifications. From 2015 on we show both values. The non-Dutch versions will present only the kick-off levels 2014 from this update. In the Dutch version the kick-off levels 2005 will be removed from update 2016-02.

Kick-off levels are derived "limits" in the absence of formal limits for substances that have a known physical condition and a classification of H3##-statements (these H-Statements are about health effects). The kick-off levels are accepted by the Dutch Labour Inspectorate at the risk assessment of hazardous substances.

Workshop DOHSBase May 26th, 2016

In our Workshops we give an in-depth introduction of the possibilities of the program (Search&Find, Compare), but also insight in the background and structure of the program and the choices we have made. The workshops are well appreciated for many years.

In 2016 the DOHSBase Compare Workshop will be held on Thursday, May 26th, 2016. The workshop lasts an entire day, and will be held in Dutch. The accreditation as is requested at Hobéon for the Dutch certification scheme of occupational hygienists. We expect that, as in previous years, will receive this accreditation.

Once we have selected a location and the accreditation is received, we will announce this information in mailings, newsletters and on our website.

Of course, an in-company version of the Workshop is also possible. In an in-company version it is possible to adapt the program tot he needs of the company. If you want more information on an in-company version of our Workshop, send an email to events@dohsbase.nl.

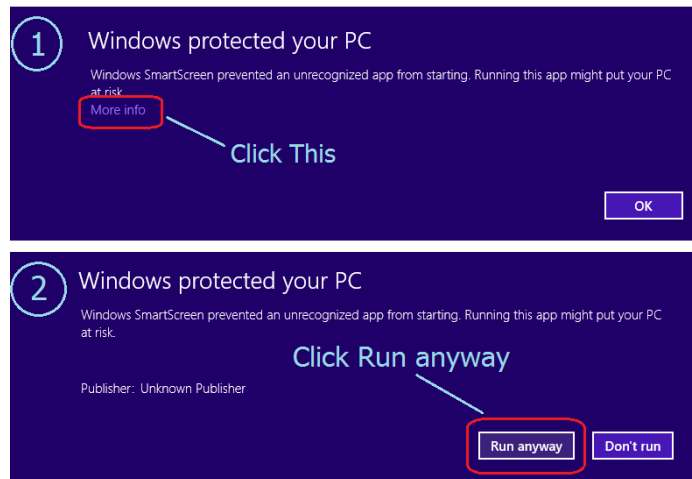
Possible installation problems in Windows 8 or 10

In some cases, installation problems may occur which can relatively easily be solved when installing DOHSBase Compare under Windows 8 or 10. In all cases they have to do with improved security settings under Windows. Whether you are dealing with it, depends on your security settings. Below it is explained how to resolve them.

The installation does not start after a double-click on the installation program

This is due to the security settings of Windows Defender. However, you do not adapt the settings. You can proceed as follows to install DOHSBase Compare.

When your computer comes with the following screen (#1): Click on 'More info', then a second screen appears (#2).
Click on 'Run anyway' and the installation of DOHSBase Compare is started.



Error message at startup (after installation)

Under Windows 10 it may happen that an error message appears at the first start of the program after installation (error with the description "OleException, there are too few parameters, etc."). The reason is that the current installation of DOHSBase Compare avoids the installation of the new update. The installation appears to be successful, but it is not.



The solution is to uninstall the old version of DOHSBase Compare first. This can be done several ways, f.i. by using the uninstall program (unins000.dat) you can find in the DOHSBase folder. Once the old version has been removed, the installation of the new version will run smoothly.

Do you still have troubles installing the update, despite the above solutions? Let us know by sending an email with the description of your installation problem (preferably with a screenshot) to: helpdesk@dohsbase.nl.